

ECONOMIC INDICATORS

NEW SOUTH WALES

EMBARGO: 11:30AM (CANBERRA TIME) TUES 15 MAY 2001

C O N T E N T S

	<i>Page</i>
Notes	2
NSW overview.....	3
Main features.....	4
List of tables and graphs	5
Population	6
Labour.....	7
Production	10
Building.....	11
Retail trade	12
New motor vehicle registrations	13
Tourism	14
Consumer and producer price indexes.....	15
Finance	16
State Government finance	17
Investment.....	18
International trade.....	19

- For further information about these and related statistics, contact Jill Tomlinson on Sydney 02 9268 4123, or the National Information Service on 1300 135 070.

NOTES

FORTHCOMING ISSUES

<i>ISSUE</i>	<i>ISSUE DATE</i>
June 2001	15 June 2001
July 2001	16 July 2001
August 2001	15 August 2001
September 2001	17 September 2001
October 2001	15 October 2001
November 2001	15 November 2001

DATA NOTES

ABS statistical series are being impacted to varying degrees as a result of The New Tax System (TNTS), introduced in Australia from 1 July 2000. TNTS included the removal of Wholesale Sales Tax and the introduction of a Goods and Services Tax (GST), and as a result, a wide range of ABS data series will reflect significant immediate and subsequent impacts. For further information see *Australian Economic Indicators*, July 2000 (Cat. no. 1350.0).

GENERAL

This publication provides information on a wide range of economic indicators which are the latest available at the time of publication. In a number of cases, figures appearing in this summary are preliminary and are subject to revision in subsequent issues.

SEASONAL ADJUSTMENT AND TREND ESTIMATION

Seasonal adjustment is a means of removing the estimated effects of normal seasonal variation from a series so that the effects of other variations on that series can be more clearly recognised. This means that movements of seasonally adjusted estimates may not be reliable indicators of trend behaviour. Smoothing seasonally adjusted series produces a measure of the underlying trend by reducing the impact of the irregular component of the series. For an explanation of seasonal adjustment derivation, refer to the publication *Seasonally Adjusted Indicators* (Cat. no. 1308.0).

SYMBOLS AND OTHER USAGES

FOB	free on board
kWh	kilowatt hour
n.a.	not available
n.p.	not available for publication but included in totals where applicable
n.y.a	not yet available
r	figure or series revised since previous issue
. .	not applicable
—	nil or rounded to zero
—	break in continuity of series (where a line is drawn across a column between two consecutive figures)

Greg Bray
Regional Director
New South Wales

NSW OVERVIEW

EMPLOYMENT	Employment in NSW rose by 0.2% in March 2001 to a seasonally adjusted figure of 3,029,500. National employment in March 2001 was 9,090,100.
UNEMPLOYMENT	Unemployment in NSW was a seasonally adjusted figure of 182,200 in March 2001. The unemployment rate was 5.7%, a decrease of 0.5 percentage points from February 2001. The national unemployment rate was 6.8%, a decrease of 0.1 percentage points from February 2001.
INDUSTRIAL DISPUTES	In NSW in January 2001 there were 5,800 working days lost due to industrial disputes, an increase of 31.8% on the working days lost in the previous month. Nationally there were 11,100 working days lost due to industrial disputes in January 2001.
PRODUCTION	Coal production for January 2001 was 9,559,000 tonnes, an increase of 1.5% from the previous month. Nationally, there were 24,920,000 tonnes of coal produced.
BUILDING APPROVALS	The seasonally adjusted number of new dwelling units approved for NSW in February 2001 decreased by 13.5% from the previous month to 2,511 dwelling units. This was also a decrease of 43.2% on the corresponding month of the previous year. Nationally, there were 8,935 new dwelling units, a decrease of 10.8% from the previous month.
RETAIL	In seasonally adjusted terms, total retail sales for NSW in February 2001 were \$4,542.3 million. This was an increase of 1.0% on the previous month.
NEW MOTOR VEHICLE REGISTRATIONS	In March 2001, new motor vehicle registrations for NSW, in seasonally adjusted terms, increased by 1.9% compared to the previous month, to 21,400 registrations.
CPI	The Consumer Price Index (CPI) for the March Quarter 2001 for Sydney was 134.0, an increase of 1.4% since the December quarter and an increase of 6.5% since the March quarter 2000.
FINANCE	The seasonally adjusted value of housing finance commitments for owner occupation in NSW in February 2001 was \$2,464 million, a decrease of 6.8% on the previous month and a decrease of 7.2% on February 2000.
GOVERNMENT FINANCE STATISTICS (GFS)	The underlying General Government operating surplus for the eight months ended 28 February 2001 was \$1,269 million. The General Government Net Lending result for the eight months ended 28 February 2001 was \$1,338 million.
IMPORTS AND EXPORTS	The customs value of imports into NSW during February 2001 was \$3,495 million, a decrease of 10.0% on January 2001. The value of exports (FOB) from NSW in February 2001 was \$1,686 million, an increase of 8.0% over the same period.

MAIN FEATURES

BUILDING APPROVALS

There was an increase in the number of new houses approved in the month of February 2001. The number of new houses (seasonally adjusted) was 1,660 in NSW, an increase of 5.4% on the previous month and a decrease of 43.3% from the corresponding period of the previous year. The number of new dwelling units (seasonally adjusted) in February 2001 was 2,511, a decrease of 13.5% on January 2001 and a decrease of 43.2% from February 2000. Nationally, the number of new dwelling units was 8,935, a decrease of 10.8% from January 2001 and a decrease of 43.5% from February 2000.

From July 2000, value data for both residential and non-residential building approval is on a GST inclusive basis.

For NSW in February 2001 the seasonally adjusted value of new residential building was \$336.7 million, a decrease of 21.7% from January 2001 and a decrease of 41.4% from February 2000. The value (seasonally adjusted) of alterations and additions to residential building in February 2001 increased 18.0% from the previous month to \$87.9 million.

The value (in original terms) of non-residential building in NSW decreased 33.0% from January 2001 to \$370.7 million and increased 30.5% from February 2000. The value of all building (in original terms) in NSW was \$775.7 million, a decrease of 22.5% from January 2001. Nationally, the value of all building was \$2,324.1 million which represented a decrease of 10.3% on January 2001 and a decrease of 28.1% on the corresponding period of the previous year.

FINANCE

The seasonally adjusted estimate for the value of housing finance in NSW was \$2,464 million in February 2001, a fall of 6.8% since January 2001 and an overall decrease of 7.2% since February 2000. Nationally, the seasonally adjusted value of lending commitments for housing finance fell by 3.6% to \$5,853 million in February 2001 and was 10.8% lower than in February 2000.

In original terms, total commitments in NSW in February 2001 rose by 8.5% to \$2,323 million, compared to January 2001. Over the same time period, there were increases in commitments for the construction of dwellings which rose by 24.8% to \$151 million, commitments for the purchase of established dwellings which rose 8.9% to \$1,630 million and commitments for the refinancing of existing dwellings which rose 6.8% to \$455 million. Commitments for the purchase of newly erected dwellings fell by 9.3% to \$88 million.

LIST OF TABLES AND GRAPHS

page

POPULATION	1 Estimated resident population, NSW	6
LABOUR	2 Labour data, latest time period, NSW and Australia	7
	3 Labour data, time series, NSW	7
	4 Labour force status of the civilian population, NSW	8
	5 Graph: Unemployment rates, NSW and Australia	9
	6 Coal and electricity production, latest time period, NSW and Australia	10
PRODUCTION	7 Coal and electricity production, time series, NSW	10
BUILDING	8 Building approvals, latest time period, NSW and Australia	11
	9 Building approvals, time series, NSW	11
RETAIL TRADE	10 Turnover of retail establishments, latest time period, NSW and Australia	12
	11 Turnover of retail establishments, seasonally adjusted, time series, NSW	12
NEW MOTOR VEHICLE REGISTRATIONS	12 New motor vehicle registrations, latest time period, NSW and Australia	13
	13 New motor vehicle registrations, seasonally adjusted, time series, NSW	13
TOURISM	14 Accommodation establishments, latest time period, NSW and Australia	14
	15 Accommodation establishments, time series, Sydney and NSW	14
	16 Graph: Hotels, motels etc., monthly room occupancy rates, Sydney Tourism Region and NSW	14
CONSUMER AND PRODUCER PRICE INDEXES	17 Consumer and producer price indexes, latest time period, NSW and Australia	15
	18 Consumer and producer price indexes, time series, NSW	15
	19 Graph: Consumer Price Index, Sydney and average of 8 capital cities	15
FINANCE	20 Finance commitments, latest time period, NSW and Australia	16
	21 Finance commitments, time series, NSW	16
STATE GOVERNMENT FINANCE	22 Government finance, general government sector, monthly operating statement, NSW	17
INVESTMENT	23 Actual private new fixed capital expenditure, latest time period, NSW and Australia	18
	24 Actual private new fixed capital expenditure, time series, NSW	18
	25 Graph: Actual private new fixed capital expenditure by type of asset, trend estimate, NSW	18
INTERNATIONAL TRADE	26 Imports and exports, latest time period, NSW and Australia	19
	27 Imports and exports, time series, NSW	19

1 ESTIMATED RESIDENT POPULATION — NSW

	<i>Estimated resident population at end of period</i>			<i>Increase during period</i>			<i>Mean estimated resident population for year ended</i>	
	<i>Males</i>	<i>Females</i>	<i>Persons</i>	<i>Natural increase(a)</i>	<i>Net estimated migration</i>	<i>Total increase</i>	<i>30 June</i>	<i>31 December</i>
	<i>'000</i>	<i>'000</i>	<i>'000</i>	<i>'000</i>	<i>'000</i>	<i>'000</i>	<i>'000</i>	<i>'000</i>
1998	3 164.5	3 204.0	6 368.5	39.9	28.1	68.1	6 303.5	6 335.7
1999	r 3 198.5	r 3 235.1	r 6 433.6	42.3	25.8	68.2	6 367.3	r 6 397.6
2000	n.y.a.	n.y.a.	n.y.a.	n.y.a.	n.y.a.	n.y.a.	6 430.0	n.y.a.
1999								
March qtr	3 171.0	3 210.5	6 381.5	10.7	2.3	13.0
June qtr	3 179.2	3 217.5	6 396.7	10.1	5.1	15.2
September qtr	3 187.8	3 224.7	6 412.5	8.1	7.7	15.8
December qtr	3 198.5	3 235.1	6 433.6	13.4	7.7	21.1
2000								
March qtr	3 205.0	3 240.6	6 445.7	7.6	4.5	12.1
June qtr	3 214.6	3 248.9	6 463.5	12.5	5.2	17.8

(a) Excess of live births over deaths.

Source: Australian Demographic Statistics (Cat. no. 3101.0).

2 LABOUR — NSW AND AUSTRALIA

	Unit	Latest period	Latest figure	New South Wales		Australia		
				Change from prior period	Change from same period prior year	Latest figure	Change from prior period	Change from same period prior year
				%	%	no.	%	%
Employed persons (seasonally adjusted)	'000	March 2001	3 029.5	0.2	0.5	9 090.1	-0.1	1.3
Unemployed persons (seasonally adjusted)	'000	March 2001	182.2	-9.1	-5.1	662.4	-1.7	0.6
Labour force (seasonally adjusted)	'000	March 2001	3 211.7	-0.3	0.2	9 752.5	-0.2	1.2
Participation rate (seasonally adjusted)	%	March 2001	61.9	-0.5	-1.0	63.5	-0.3	-0.2
Unemployment rate (seasonally adjusted)	%	March 2001	5.7	-8.1	-5.0	6.8	-1.4	—
Industrial disputes — working days lost	'000	January 2001	5.8	31.8	-22.7	11.1	-5.9	-56.6
Job vacancies	'000	February 2001	32.0	-20.8	-31.0	95.5	-12.1	-15.3
Average weekly employee earnings — full-time adult ordinary time earnings (seasonally adjusted)	\$	November 2000	844.7	1.2	4.9	802.6	0.5	5.1

Source: Average Weekly Earnings, States and Australia (Cat. no. 6302.0); Industrial Disputes, Australia (Cat. no. 6321.0); Job Vacancies, Australia (Cat. no. 6354.0); Labour Force, Australia, Preliminary (Cat. no. 6202.0).

3 LABOUR — NSW

	Seasonally adjusted(a)						
	Employed persons	Unemployed persons	Labour force	Participation rate	Unemployment rate	Industrial disputes (working days lost)	Job vacancies
	'000	'000	'000	%	%	'000	'000
2000							
January	2 981.7	189.3	3 171.0	62.0	6.0	7.5	..
February	3 001.8	187.5	3 189.3	62.2	5.9	20.1	46.4
March	3 013.6	192.0	3 205.6	62.5	6.0	11.8	..
April	3 034.0	185.1	3 219.1	62.7	5.7	20.0	..
May	3 049.2	184.9	3 234.1	62.9	5.7	47.1	41.8
June	3 039.3	185.7	3 225.0	62.6	5.8	16.5	..
July	3 054.8	173.9	3 228.7	62.6	5.4	7.5	..
August	3 071.6	176.9	3 248.5	63.0	5.4	8.8	43.9
September	3 055.3	177.8	3 233.1	62.6	5.5	8.3	..
October	3 038.7	178.1	3 216.8	62.2	5.5	5.3	..
November	3 022.2	183.5	3 205.7	62.0	5.7	9.2	40.4
December	3 027.9	191.2	3 219.1	62.2	5.9	4.4	..
2001							
January	3 024.1	191.2	3 215.3	62.1	5.9	5.8	..
February	3 022.0	200.5	3 222.5	62.2	6.2	n.y.a.	32.0
March	3 029.5	182.2	3 211.7	61.9	5.7	n.y.a.	..

(a) Seasonally adjusted estimates have been revised from February 1978 to reflect the annual reanalysis of seasonal factors which occurs in February each year. For further information please see the feature article in the February 2001 edition of Labour Force, Australia (Cat. no. 6203.0).

Source: Industrial Disputes, Australia (Cat. no. 6321.0); Job Vacancies, Australia (Cat. no. 6354.0); Labour Force, Australia, Preliminary (Cat. no. 6202.0).

4 LABOUR FORCE STATUS, NSW — ORIGINAL

	<i>Employed</i>		<i>Unemployed</i>		<i>Labour force</i>	<i>Not in labour force</i>	<i>Civilian population aged 15 years and over</i>	<i>Unemployment rate(a)</i>	<i>Participation rate(b)</i>
	<i>Full-time workers</i>	<i>Total</i>	<i>Looking for full-time work</i>	<i>Total</i>					
	'000	'000	'000	'000					
MALES									
March									
1997	1 434.3	1 604.1	125.2	146.0	1 750.1	665.4	2 415.6	8.3	72.5
1998	1 434.0	1 614.9	122.2	139.4	1 754.3	694.5	2 448.8	7.9	71.6
1999	1 454.3	1 661.9	102.9	126.1	1 788.0	695.2	2 483.1	7.1	72.0
2000									
January	1 497.6	1 680.2	104.8	119.9	1 800.1	717.6	2 517.7	6.7	71.5
February	1 503.6	1 694.0	95.8	113.8	1 807.8	713.1	2 520.9	6.3	71.7
March	1 494.2	1 701.8	93.5	114.1	1 815.9	708.2	2 524.0	6.3	71.9
April	1 504.7	1 716.6	81.8	100.5	1 817.1	710.5	2 527.6	5.5	71.9
May	1 504.2	1 719.5	79.7	98.2	1 817.7	713.5	2 531.1	5.4	71.8
June	1 517.3	1 718.7	86.3	100.5	1 819.2	715.5	2 534.7	5.5	71.8
July	1 528.2	1 732.5	81.4	99.6	1 832.1	705.5	2 537.6	5.4	72.2
August	1 492.5	1 701.7	87.1	101.2	1 802.8	737.7	2 540.5	5.6	71.0
September	1 519.3	1 738.0	85.8	106.6	1 844.6	698.9	2 543.5	5.8	72.5
October	1 506.1	1 719.3	85.0	101.5	1 820.9	724.6	2 545.5	5.6	71.5
November	1 489.4	1 700.1	88.3	104.8	1 805.0	742.5	2 547.4	5.8	70.9
December	1 512.9	1 727.2	94.4	113.4	1 840.5	708.9	2 549.4	6.2	72.2
2001									
January	1 473.0	1 680.0	107.4	126.0	1 806.1	745.2	2 551.3	7.0	70.8
February	1 477.7	1 679.6	105.7	130.0	1 809.6	743.5	2 553.2	7.2	70.9
March	1 482.7	1 696.5	92.5	112.5	1 809.0	746.1	2 555.1	6.2	70.8
FEMALES									
March									
1997	724.4	1 214.4	72.4	109.0	1 323.5	1 183.6	2 507.1	8.2	52.8
1998	718.4	1 220.7	72.8	104.5	1 325.2	1 213.1	2 538.3	7.9	52.2
1999	728.8	1 238.3	64.3	108.7	1 347.0	1 223.3	2 570.2	8.1	52.4
2000									
January	776.9	1 257.2	55.3	80.7	1 337.9	1 262.8	2 600.7	6.0	51.4
February	755.7	1 282.3	57.0	98.2	1 380.5	1 222.7	2 603.2	7.1	53.0
March	771.1	1 307.8	57.0	92.4	1 400.2	1 205.4	2 605.6	6.6	53.7
April	791.3	1 318.7	52.1	82.4	1 401.1	1 207.3	2 608.4	5.9	53.7
May	784.9	1 324.9	53.2	83.7	1 408.7	1 202.5	2 611.2	5.9	53.9
June	783.4	1 326.0	39.8	76.1	1 402.2	1 211.8	2 614.0	5.4	53.6
July	812.3	1 344.0	36.0	60.9	1 404.8	1 211.8	2 616.7	4.3	53.7
August	787.2	1 329.4	40.1	72.3	1 401.7	1 217.6	2 619.3	5.2	53.5
September	805.6	1 356.4	43.0	73.9	1 430.3	1 191.7	2 622.0	5.2	54.6
October	784.8	1 332.5	40.1	67.7	1 400.2	1 223.3	2 623.5	4.8	53.4
November	787.6	1 318.1	43.6	70.6	1 388.7	1 236.2	2 624.9	5.1	52.9
December	799.2	1 344.3	53.4	76.2	1 420.5	1 205.9	2 626.4	5.4	54.1
2001									
January	785.8	1 298.3	48.3	77.1	1 375.4	1 252.2	2 627.7	5.6	52.3
February	790.6	1 316.1	59.6	96.0	1 412.1	1 216.9	2 629.0	6.8	53.7
March	800.3	1 328.9	45.7	83.3	1 412.2	1 218.1	2 630.3	5.9	53.7

(a) For footnotes see end of table.

4 LABOUR FORCE STATUS, NSW — ORIGINAL — continued

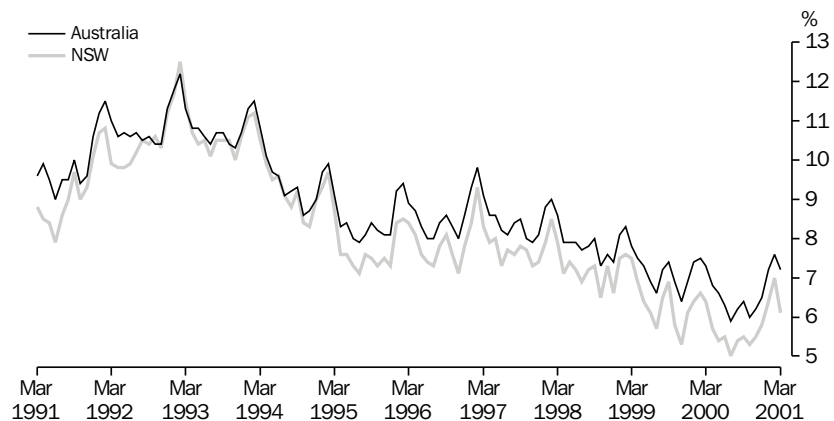
	<u>Employed</u>		<u>Unemployed</u>		<u>Labour force</u>	<u>Not in labour force</u>	<u>Civilian population aged 15 years and over</u>	<u>Unemployment rate(a)</u>	<u>Participation rate(b)</u>
	<u>Full-time workers</u>	<u>Total</u>	<u>Looking for full-time work</u>	<u>Total</u>					
	'000	'000	'000	'000					
PERSONS									
March									
1997	2 158.7	2 818.5	197.6	255.0	3 073.6	1 849.0	4 922.6	8.3	62.4
1998	2 152.4	2 835.6	195.0	243.9	3 079.5	1 907.6	4 987.1	7.9	61.7
1999	2 183.2	2 900.2	167.2	234.8	3 134.9	1 918.4	5 053.4	7.5	62.0
2000									
January	2 274.5	2 937.4	160.1	200.6	3 138.0	1 980.4	5 118.4	6.4	61.3
February	2 259.3	2 976.3	152.8	212.0	3 188.3	1 935.7	5 124.0	6.6	62.2
March	2 265.4	3 009.6	150.4	206.5	3 216.1	1 913.6	5 129.7	6.4	62.7
April	2 296.0	3 035.3	133.9	182.9	3 218.2	1 917.8	5 136.0	5.7	62.7
May	2 289.1	3 044.4	132.8	181.9	3 226.3	1 916.0	5 142.3	5.6	62.7
June	2 300.6	3 044.7	126.0	176.6	3 221.3	1 927.3	5 148.6	5.5	62.6
July	2 340.5	3 076.5	117.4	160.5	3 237.0	1 917.3	5 154.3	5.0	62.8
August	2 279.7	3 031.1	127.2	173.4	3 204.6	1 955.3	5 159.9	5.4	62.1
September	2 324.9	3 094.4	128.9	180.5	3 274.9	1 890.6	5 165.5	5.5	63.4
October	2 290.9	3 051.8	125.1	169.2	3 221.1	1 947.9	5 169.0	5.3	62.3
November	2 277.0	3 018.2	131.9	175.4	3 193.7	1 978.7	5 172.4	5.5	61.7
December	2 312.2	3 071.4	147.8	189.6	3 261.0	1 914.8	5 175.8	5.8	63.0
2001									
January	2 258.8	2 978.4	155.7	203.1	3 181.5	1 997.5	5 179.0	6.4	61.4
February	2 268.3	2 995.8	165.2	226.0	3 221.8	1 960.4	5 182.2	7.0	62.2
March	2 282.9	3 025.4	138.3	195.8	3 221.2	1 964.2	5 185.4	6.1	62.1

(a) The number of unemployed in each group expressed as a percentage of the labour force in the same group.

(b) The labour force in each group expressed as a percentage of the civilian population aged 15 years and over in the same group.

Source: Labour Force, Australia, Preliminary (Cat. no. 6202.0).

5 UNEMPLOYMENT RATE — ORIGINAL



Source: Labour Force, Australia, Preliminary (Cat. no. 6202.0)

6 COAL AND ELECTRICITY PRODUCTION, NSW AND AUSTRALIA — ORIGINAL

	Unit	Latest period	New South Wales				Australia	
			Latest figure	Change from prior period	Change from same period prior year	Latest figure	Change from prior period	Change from same period prior year
				%	%		%	%
Raw coal won								
Underground	'000 tonnes	Jan 2001	3 216	1.6	-11.5	6 276	5.4	-30.8
Open cut	'000 tonnes	Jan 2001	6 343	1.4	7.1	18 644	9.1	-13.3
Total	'000 tonnes	Jan 2001	9 559	1.5		24 920	8.2	-18.5
Electricity	mill. kWh	Dec qtr 2000	16 749	-13.2	9.6	45 977	-6.9	3.1

Source: Joint Coal Board for NSW and Australia from ABS unpublished statistics, Manufacturing Production, Australia (Cat. no. 8301.0).

7 COAL AND ELECTRICITY PRODUCTION, NSW — ORIGINAL

	Raw coal won			Electricity mill. kWh
	Underground	Open cut	Total	
	'000 tonnes	'000 tonnes	'000 tonnes	
1997-1998	58 299	75 710	134 009	61 804
1998-1999	51 158	80 209	131 367	63 743
1999-2000 r	52 591	79 715	132 306	65 934
1999				
October	4 102	6 088	10 189	} 15 284
November	4 340	6 213	10 553	
December	4 662	7 066	11 728	
2000				
January r	3 633	5 922	9 555	} 16 339
February	3 834	6 376	10 210	
March	4 799	6 549	11 348	
April	3 854	5 084	8 938	} 17 334
May	5 601	8 611	14 212	
June	3 793	6 443	10 237	
July	3 958	6 161	10 119	} 19 289
August	5 609	8 310	13 919	
September	3 838	7 198	11 036	
October	4 523	6 976	11 499	} 16 749
November	5 679	7 830	13 509	
December r	3 166	6 253	9 419	
2001				
January	3 216	6 343	9 559	

Source: Joint Coal Board, Manufacturing Production, Australia (Cat. no. 8301.0).

8 BUILDING APPROVALS — NSW AND AUSTRALIA

	Unit	New South Wales				Australia		
		Latest period	Latest figure	Change from prior period %	Change from same period prior year %	Latest figure	Change from prior period %	Change from same period prior year %
Number of dwelling units(a) (seasonally adjusted (b))								
New houses	no.	Feb 2001	1 660	5.4	-43.3	6 699	4.2	-42.5
Total	no.	Feb 2001	2 511	-13.5	-43.2	8 935	-10.8	-43.5
Value of new residential building (seasonally adjusted)	\$m	Feb 2001	336.7	-21.7	-41.4	1 250.5	-8.5	-37.2
Value of alterations and additions to residential building(c) (seasonally adjusted)	\$m	Feb 2001	87.9	18.0	-29.6	257.3	-5.0	-18.7
Value of non-residential building(d) (original)	\$m	Feb 2001	370.7	-33.0	30.5	864.4	-25.9	-7.4
Value of all building (original)	\$m	Feb 2001	775.7	-22.5	-19.3	2 324.1	-10.3	-28.1

(a) Includes dwelling units approved as part of the construction of non-residential building and alterations and additions to existing buildings (including conversions to dwelling units).

(b) Seasonally adjusted and trend estimates to November 2000 have been revised. See Building Approvals, Australia (Cat. no. 8731.0).

(c) Valued at \$10,000 or more. Includes conversions of existing buildings into residential buildings.

(d) Valued at \$50,000 or more.

Source: Building Approvals, Australia (Cat. no. 8731.0).

9 BUILDING APPROVALS — NSW

	Number of dwelling units(a), seasonally adjusted				Value of building approvals(b)			
	New houses		Total		Seasonally adjusted		Original	
	Private sector	Total	Private sector	Total	Alterations and additions to residential building	Non-residential building(d)	All building	
	no.	no.	no.	no.	\$m	\$m	\$m	\$m
1997-1998	5 910.9	13 348.6
1998-1999	4 555.3	12 026.7
1999-2000	4 477.3	12 560.8
1999								
December	3 049	3 066	4 605	4 651	591.7	114.7	283.0	983.4
2000								
January	2 755	2 769	4 359	4 452	633.1	93.6	361.6	961.1
February	2 914	2 930	4 305	4 419	574.7	124.9	284.0	961.5
March	2 810	2 820	4 281	4 310	547.3	127.3	452.2	1 124.8
April	2 191	2 212	3 606	3 747	484.6	121.9	533.7	1 064.1
May	2 048	2 066	3 870	3 955	533.6	124.3	311.5	1 098.8
June	1 876	1 883	3 162	3 285	447.8	83.3	350.0	860.9
July	1 302	1 309	1 829	1 916	283.5	75.0	286.2	667.3
August	1 472	1 481	2 370	2 439	372.0	78.2	274.5	761.4
September	1 402	1 408	2 698	2 783	397.6	81.3	309.4	765.1
October	1 725	1 735	3 529	3 573	458.5	115.6	380.8	938.8
November	1 555	1 564	2 984	3 064	410.6	83.1	269.9	857.0
December	1 470	1 482	2 840	2 940	382.9	154.6	195.1	676.5
2001								
January	1 567	1 575	2 857	2 903	429.8	74.5	552.9	1 000.6
February	1 654	1 660	2 345	2 511	336.7	87.9	370.7	775.7

(a) Includes dwelling units approved as part of the construction of non-residential building and alterations and additions to existing buildings (including conversions to dwelling units).

(b) From July 2000, value data for both residential and non-residential building approvals will be on a GST inclusive basis.

(c) Valued at \$10,000 or more. Includes conversions of existing buildings into residential buildings.

(d) Valued at \$50,000 or more.

Source: Building Approvals, Australia (Cat. no. 8731.0).

10 TURNOVER OF RETAIL ESTABLISHMENTS(a), NSW AND AUSTRALIA(b) — SEASONALLY ADJUSTED

	Latest period	New South Wales			Australia		
		Latest figure	Change from prior period	Change from same period prior year	Latest figure	Change from prior period	Change from same period prior year
		\$m	%	%	\$m	%	%
Food retailing	Feb 2001	1 676.4	1.1	8.9	5 231.7	1.4	8.0
Department stores	Feb 2001	389.9	0.8	3.7	1 120.6	1.9	4.7
Clothing and soft good retailing	Feb 2001	297.0	-1.0	1.1	854.1	-0.4	8.3
Household good retailing	Feb 2001	484.1	-1.7	5.6	1 490.6	0.3	3.9
Recreational good retailing	Feb 2001	236.7	5.2	21.1	631.5	1.5	3.8
Other retailing	Feb 2001	474.0	4.2	10.6	1 467.1	3.2	17.2
Hospitality and services	Feb 2001	984.1	0.4	14.3	2 309.9	0.4	8.6
Total value of retail sales	Feb 2001	4 542.3	1.0	9.4	13 105.6	1.2	8.1

(a) The figures shown are derived from a monthly survey of retail establishments. Excludes motor vehicle, boat and caravan dealers, service stations, smash repairers, tyre and battery retailers, bread and milk vendors, footwear repairers and electrical appliance repairers n.e.c. Retail establishments which do not have employees are excluded from the survey. Turnover includes retail sales, wholesale sales, takings from repairs, meals and hiring of goods; and commissions from agency activity (e.g. commissions received from collecting dry cleaning, selling lottery tickets etc.).

(b) Data from July 2000 reference month onwards are recorded inclusive of GST.

Source: Retail Trade, Australia (Cat. no. 8501.0).

11 TURNOVER OF RETAIL ESTABLISHMENTS(a), NSW(b) — SEASONALLY ADJUSTED(c)

	Food retailing	Department stores	Clothing and soft good retailing	Household good retailing	Recreational good retailing	Other retailing	Hospitality and services	Total
	\$m	\$m	\$m	\$m	\$m	\$m	\$m	\$m
1999								
December	1 605.9	375.2	320.7	420.3	187.5	437.1	865.1	4 211.9
2000								
January	1 537.9	372.7	316.2	435.5	197.5	423.2	849.3	4 132.3
February	1 539.9	376.1	293.9	458.6	195.5	428.7	860.8	4 153.4
March	1 548.9	372.9	319.3	451.2	199.1	425.5	868.5	4 185.3
April	1 563.9	376.5	302.3	447.6	201.9	428.7	875.2	4 196.0
May	1 552.6	382.6	313.0	461.4	208.8	439.0	872.3	4 229.7
June	1 587.5	463.8	374.0	580.4	204.0	479.3	887.8	4 576.8
July	1 603.7	299.9	277.8	427.3	221.5	395.5	930.2	4 155.9
August	1 637.7	397.1	300.1	472.5	213.4	424.4	993.1	4 438.3
September	1 650.7	393.8	366.4	466.3	207.2	461.4	1 056.7	4 602.5
October	1 633.1	387.6	309.6	470.3	212.8	449.7	983.6	4 446.7
November	1 608.4	373.8	305.6	482.3	211.7	439.9	954.3	4 376.1
December	1 639.4	392.8	311.1	487.5	209.4	450.3	933.9	4 424.3
2001								
January	1 658.5	386.9	300.1	492.7	225.0	454.7	979.7	4 497.5
February	1 676.4	389.9	297.0	484.1	236.7	474.0	984.1	4 542.3

(a) The figures shown are derived from a monthly survey of retail establishments. Excludes motor vehicle, boat and caravan dealers, service stations, smash repairers, tyre and battery retailers, bread and milk vendors, footwear repairers and electrical appliance repairers n.e.c. Retail establishments which do not have employees are excluded from the survey. Turnover includes retail sales, wholesale sales, takings from repairs, meals and hiring of goods; and commissions from agency activity (e.g. commissions received from collecting dry cleaning, selling lottery tickets etc.).

(b) Data from July 2000 reference month onwards are recorded inclusive of GST.

(c) Data for previous months have been revised due to concurrent seasonal adjustment methodology. See Explanatory Notes in Retail Trade, Australia (Cat. no. 8501.0).

Source: Retail Trade, Australia (Cat. no. 8501.0).

12 NEW MOTOR VEHICLE REGISTRATIONS(a), NSW AND AUSTRALIA — SEASONALLY ADJUSTED(b)

	Latest period	New South Wales			Australia		
		Latest figure no.	Change from prior period	Change from same period prior year	Latest figure no.	Change from prior period	Change from same period prior year
			%	%		%	%
Passenger vehicles	Mar 2001	18 296	3.3	2.0	53 088	2.5	5.3
Other vehicles (excluding motor cycles)	Mar 2001	3 104	-5.7	-12.3	10 162	1.2	-2.3
Total registrations (excluding motor cycles)	Mar 2001	21 400	1.9	-0.3	63 250	2.3	4.0

(a) Includes vehicles (other than those of the defence forces) owned by Government departments and authorities. Excludes mobile plant and equipment, tractors, trailers and non-motorised caravans.

(b) The changes to the seasonally adjusted series result from the annual re-estimation of seasonal factors.

Source: *New Motor Vehicle Registrations, Australia, Preliminary (Cat. no. 9301.0)*.

13 NEW MOTOR VEHICLE REGISTRATIONS(a), NSW — SEASONALLY ADJUSTED(b)

	Passenger vehicles no.	Other vehicles (excluding motor cycles) no.	Total (excluding motor cycles) no.
2000			
January	17 846	3 751	21 597
February	18 467	3 865	22 332
March	17 932	3 538	21 470
April	17 608	3 581	21 189
May	16 985	3 670	20 655
June	13 466	3 651	17 117
July	23 670	3 066	26 736
August	23 809	3 616	27 425
September	19 247	3 387	22 634
October	18 823	3 328	22 151
November	19 611	3 063	22 673
December	21 804	3 430	25 234
2001			
January	18 585	3 529	22 114
February	17 706	3 290	20 996
March	18 296	3 104	21 400

(a) Includes vehicles (other than those of the defence forces) owned by Government departments and authorities. Excludes mobile plant and equipment, tractors, trailers and non-motorised caravans.

(b) The changes to the seasonally adjusted series result from the annual re-estimation of seasonal factors.

Source: *New Motor Vehicle Registrations, Australia, Preliminary (Cat. no. 9301.0)*.

14 ACCOMMODATION ESTABLISHMENTS(a) NSW AND AUSTRALIA — ORIGINAL

	Unit	Latest period	Latest figure	New South Wales		Australia		
				Change from prior period	Change from same period prior year	Change from prior period	Change from same period prior year	
				%	%	%	%	
Room nights	'000	Dec qtr 2000	3 498.0	-1.3	2.2	10 543.0	0.9	1.2
Room occupancy rate	%	Dec qtr 2000	58.7	-1.7	-3.6	58.8	0.7	-1.5
Takings(b)	\$'000	Dec qtr 2000	460 756	-17.0	16.6	1 239 908	-4.8	11.5

(a) Licensed hotels with facilities, motels and guest houses and serviced apartments with 15 or more rooms or units.

(b) Includes GST.

Source: *Tourist Accommodation, Australia (Cat. no. 8635.0)*.

15 ACCOMMODATION ESTABLISHMENTS(a) SYDNEY AND NSW — ORIGINAL

	Sydney Tourism Region(b)			New South Wales		
	Room nights	Room occupancy rate	Takings(c)	Room nights	Room occupancy rate	Takings
	'000	%	\$'000	'000	%	\$'000
1999						
September qtr	1 865.9	71.6	247 543	3 345.0	61.1	375 014
December qtr	1 962.5	72.3	276 165	3 423.1	60.9	395 165
2000						
March qtr	1 980.0	71.7	279 374	3 388.1	60.3	397 869
June qtr	1 902.6	67.1	258 225	3 324.0	58.1	374 005
September qtr	2 093.6	69.6	412 378	3 543.3	59.7	555 244
December qtr	2 096.0	68.8	334 433	3 498.0	58.7	460 756

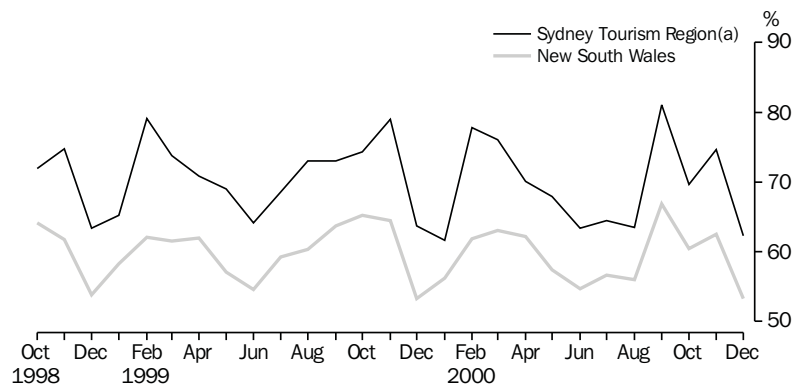
(a) Licensed hotels with facilities, motels and guest houses and serviced apartments with 15 or more rooms or units.

(b) Excludes Gosford, Wyong and Blue Mountains Statistical Local Areas.

(c) Takings after 1 July 2000 are on a GST inclusive basis.

Source: *Tourist Accommodation, Small Area Data, New South Wales (Cat. no. 8635.1.40.001)*.

16 ACCOMMODATION ESTABLISHMENTS,
MONTHLY ROOM OCCUPANCY RATE — ORIGINAL



(a) Excludes Gosford, Wyong and Blue Mountains Statistical Local Areas.

Source: *Tourist Accommodation, Small Area Data, NSW (Prod. no. 8635.1.40.001)*.

17 CONSUMER AND PRODUCER PRICE INDEXES — NSW AND AUSTRALIA

	Unit	Latest period	Latest figure	New South Wales(a)		Australia(b)		
				Change from prior period	Change from same period prior year	Change from prior period	Change from same period prior year	
				%	%	Latest figure	%	%
Consumer Price Index (all groups)	1989-90 =100.0	Mar qtr 2001	134.0	1.4	6.5	132.7	1.1	6.0
Price index of materials used in house building (all groups)	1989-90 =100.0	Mar qtr 2001	129.8	—	1.4	124.2	-0.2	0.3
Price index of materials used in building other than house building (all groups)	1989-90 =100.0	Mar qtr 2001	116.4	0.6	—	116.7	0.3	0.3

(a) Refers to State capital city — Sydney.

(b) For the Consumer Price Index this is the weighted average of eight capital cities and for the other two indexes, the weighted average of the six State capital cities.

Source: Consumer Price Index, Australia (Cat. no. 6401.0); Price Index of Materials Used in Building Other Than House Building, Six State Capital Cities (Cat. no. 6407.0); Price Index of Materials Used in House Building, Six State Capital Cities (Cat. no. 6408.0).

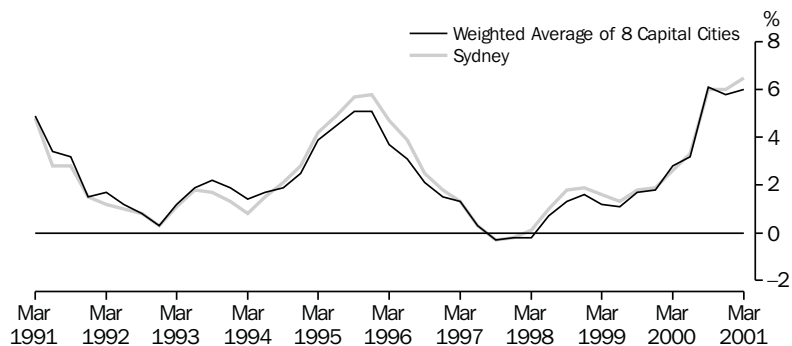
18 CONSUMER AND PRODUCER PRICE INDEXES — NSW(a)

	Consumer Price Index, all groups	Price Index of materials used in house building, all groups	Price Index of materials used in building other than house building, all groups
	1989-90 = 100.0	1989-90 = 100.0	1989-90 = 100.0
1999			
December qtr	124.7	124.4	115.3
2000			
March qtr	125.8	128.0	116.4
June qtr	127.0	131.2	117.3
September qtr	131.6	130.0	115.4
December qtr	132.2	129.8	115.7
2001			
March qtr	134.0	129.8	116.4

(a) Refers to State capital city — Sydney.

Source: Consumer Price Index, Australia (Cat. no. 6401.0); Price Index of Materials Used in Building Other Than House Building, Six State Capital Cities (Cat. no. 6407.0); Price Index of Materials Used in House Building, Six State Capital Cities (Cat. no. 6408.0).

19 CONSUMER PRICE INDEX, ANNUAL RATE OF CHANGE



Source: Consumer Price Index (Cat. no. 6401.0).

20 SECURED HOUSING FINANCE COMMITMENTS TO INDIVIDUALS FOR OWNER OCCUPATION — NSW AND AUSTRALIA

	Latest period	New South Wales			Australia		
		Latest figure \$m	Change from prior period	Change from same period prior year	Latest figure \$m	Change from prior period	Change from same period prior year
			%	%		%	%
Lending commitments for the construction or purchase of dwellings—							
Construction of dwellings	Feb 2001	151	24.8	-53.4	516	12.9	-48.7
Purchase of newly erected dwellings	Feb 2001	88	-9.3	-14.6	206	-8.0	-23.7
Purchase of established dwellings(a)	Feb 2001	1 630	8.9	-7.3	3 802	6.5	-12.1
Refinancing of existing dwellings	Feb 2001	455	6.8	7.6	1 142	8.7	7.5
Lending commitments for alterations and additions	Feb 2001	96	21.5	-15.8	237	11.3	-16.5
Total lending commitments to individuals for housing(b)	Feb 2001	2 323	8.5	-11.0	5 666	6.9	-15.0
Total lending commitments to individuals for housing (seasonally adjusted)(b)	Feb 2001	2 464	-6.8	-7.2	5 853	-3.6	-10.8

(a) Excludes refinancing.

(b) Excludes alterations and additions.

Source: Housing Finance for Owner Occupation, Australia (Cat. no. 5609.0).

21 SECURED HOUSING FINANCE COMMITMENTS TO INDIVIDUALS FOR OWNER OCCUPATION — NSW

	Lending commitments for the construction or purchase of dwellings				Total lending commitments to individuals for housing(b)		
	Construction of dwellings	Purchase of newly erected dwellings	Purchase of established dwellings(a)	Refinancing of existing dwellings	Lending commitments for alterations and additions	Original	Seasonally adjusted
					\$m		
1997-1998	2 625	1 280	14 445	3 573	1 174	21 923	..
1998-1999	2 990	1 147	16 761	4 026	1 126	24 925	..
1999-2000	3 268	1 129	21 637	4 993	1 271	31 027	..
1999							
December	275	90	1 893	415	105	2 672	2 768
2000							
January	226	70	1 404	309	83	2 010	2 713
February	324	103	1 759	423	114	2 609	2 656
March	296	101	1 956	488	123	2 842	2 492
April	213	77	1 581	358	94	2 229	2 407
May	246	94	1 909	524	119	2 772	2 402
June	197	86	1 629	474	105	2 386	2 232
July	170	71	1 436	451	89	2 129	2 166
August	166	88	1 710	480	91	2 444	2 336
September	152	83	1 467	418	84	2 120	2 165
October	151	65	1 397	492	90	2 105	2 123
November	160	82	1 757	542	85	2 542	2 357
December	143	88	1 688	483	80	2 402	2 690
2001							
January	121	97	1 497	426	79	2 141	2 644
February	151	88	1 630	455	96	2 323	2 464

(a) Excludes refinancing.

(b) Excludes alterations and additions.

Source: Housing Finance for Owner Occupation, Australia (Cat. no. 5609.0).

22 NSW GOVERNMENT FINANCE, GENERAL GOVERNMENT SECTOR(a)

	Budget 12 months to 30/06/2001 \$m	Actual 8 months to 28/02/2001 \$m
State revenues		
Taxation	12 412	8 489
Commonwealth grants	12 780	8 615
Financial distributions	1 210	826
Fines, regulatory fees and other	792	582
<i>Total state revenues</i>	27 194	18 512
Operating revenues		
Sale of goods and services	2 171	1 493
Investment income	391	367
Grants and contributions	421	392
Other revenue	280	205
<i>Total operating revenues</i>	3 263	2 457
Expenses		
Employee related — superannuation	1 540	1 099
Employee related — other	12 157	8 076
Other operating	6 765	4 535
Maintenance	1 120	609
Depreciation and amortisation	995	949
Recurrent grants and subsidies	3 944	2 740
Capital grants and subsidies	1 397	757
Finance costs	1 287	950
<i>Total expenses</i>	29 205	19 715
Gain/(loss) on sale of non-current assets	-14	15
Net cost of services	25 956	17 243
Surplus (underlying)	1 238	1 269
Abnormal items	2 400	2 582
Surplus/(deficit) for the year	3 638	3 851
less valuation gains	-1 888	-2 103
GFS net operating balance	1 750	1 748
less capital acquisitions	-2 493	-1 442
plus depreciation	995	949
plus asset sales & other	407	83
<i>GFS net lending</i>	659	1 338

(a) Prior to the 2000–2001 Budget, NSW Government Finance Statistics were published on a cash basis. Monthly Government Finance Statistics reporting has now moved to an accruals framework.

Source: Financial Statement released by NSW Treasury. Figures may differ from data published in annual ABS publications.

23 ACTUAL PRIVATE NEW FIXED CAPITAL EXPENDITURE, CURRENT PRICES, NSW AND AUSTRALIA — TREND

Type of asset	Latest period	New South Wales			Australia		
		Latest figure	Change from prior period	Change from same period prior year	Latest figure	Change from prior period	Change from same period prior year
		\$m	%	%	\$m	%	%
New buildings and structures	Dec qtr 2000	836	-7.4	-12.2	2 625	-7.2	-4.9
Equipment, plant and machinery	Dec qtr 2000	2 839	-2.5	6.7	7 464	-0.5	-1.7
Total	Dec qtr 2000	3 675	-3.6	1.7	10 089	-2.4	-2.5

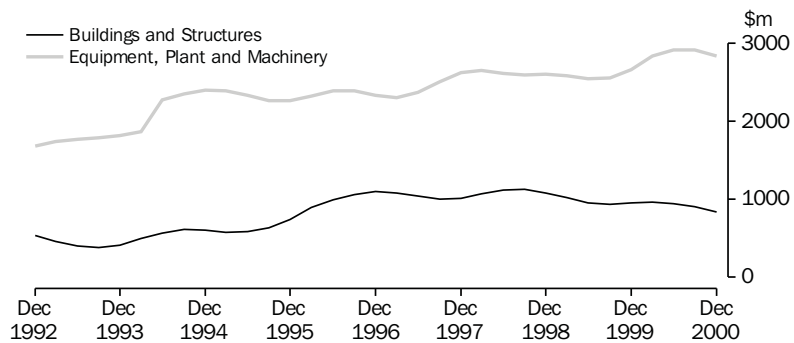
Source: Private New Capital Expenditure, State Estimates (Cat. no. 5646.0).

24 ACTUAL PRIVATE NEW FIXED CAPITAL EXPENDITURE, CURRENT PRICES — NSW, TREND

	Type of asset		Total
	New buildings and structures	Equipment, plant and machinery	
	\$m	\$m	
1999			
September qtr	935	2 559	3 494
December qtr	952	2 661	3 613
2000			
March qtr	960	2 838	3 798
June qtr	944	2 917	3 861
September qtr	903	2 911	3 814
December qtr	836	2 839	3 675

Source: Private New Capital Expenditure, State Estimates (Cat. no. 5646.0).

25 ACTUAL PRIVATE NEW FIXED CAPITAL EXPENDITURE, CURRENT PRICES, NSW — TREND



Source: Private New Capital Expenditure, State Estimates (Cat. no. 5646.0).

26 INTERNATIONAL TRADE, IMPORTS(a) AND EXPORTS(b) — NSW AND AUSTRALIA

	Latest period	New South Wales			Australia		
		Latest figure	Change from prior period		Latest figure	Change from prior period	
			\$m	%		%	\$m
Overseas imports into NSW	Feb 2001	3 495	-10.0	-6.3	8 331	-9.8	-3.7
Total overseas exports(c)	Feb 2001	1 686	8.0	11.3	8 756	10.1	11.8
Export commodities and SITC(d) code							
Meat and meat preparations (01)	Feb 2001	115	23.1	33.3	439	47.0	22.2
Cereals and cereal preparations (04)	Feb 2001	116	33.5	2.0	410	21.5	-22.6
Wool and other animal hair (268)	Feb 2001	80	28.7	11.3	289	33.4	5.6
Coal, coke and briquettes (32)	Feb 2001	262	-16.4	15.8	821	-5.6	38.1
Iron and steel (67)	Feb 2001	10	4.7	-83.6	44	-1.1	-61.2
Aluminium (684)	Feb 2001	122	-2.1	0.4	395	18.2	12.4
Office machines and automatic data processing machines (75)	Feb 2001	26	42.3	-18.2	52	77.4	5.6

(a) Figures shown are Customs value.

(b) Restrictions are placed on the release of statistics for certain commodities for reasons of confidentiality. The restrictions do not affect total export and import figures, but they can affect figures at State and commodity levels. More information on the treatment of confidential data in international merchandise trade statistics can be obtained from the Information Paper, International Merchandise Trade Statistics, Australia: Data Confidentiality (Cat.no. 5487.0), or the International Trade Confidentiality Manager on 02 6252 5409. Figures shown are Free On Board (FOB) values.

(c) Excludes re-exported goods.

(d) Standard International Trade Classification Revision 3.

Source: ABS unpublished data, International Trade database.

27 INTERNATIONAL TRADE, IMPORTS(a) AND EXPORTS(b) — NSW

	Overseas exports of SITC(c) commodities								
	Overseas imports into NSW	Total overseas exports(d)	Meat and meat preparations (01)	Cereals and cereal preparations (04)	Wool and other animal hair (268)	Coal, coke and briquettes (32)	Iron and steel (67)	Aluminium (684)	Office machines and automatic data processing machines (75)
	\$m	\$m	\$m	\$m	\$m	\$m	\$m	\$m	\$m
1998-1999	42 142	17 948	948	1 234	685	3 766	958	1 151	333
1999-2000	47 927	18 966	1 047	1 270	826	3 092	831	1 341	379
1999									
December	3 975	1 583	94	112	83	211	68	112	28
2000									
January	3 462	1 331	68	68	55	261	50	101	22
February	3 731	1 515	86	114	72	226	60	122	32
March	4 341	1 637	95	123	78	238	79	132	43
April	3 534	1 612	87	94	59	285	98	109	35
May	4 580	1 771	93	118	69	295	109	122	30
June	4 866	1 768	93	112	66	268	94	129	29
July	4 493	1 779	101	138	66	318	64	129	31
August	4 947	1 826	99	143	66	301	67	135	27
September	4 472	r 1 846	89	149	78	292	10	134	30
October	5 071	r 2 042	120	160	114	337	10	148	37
November	4 936	1 975	r 118	139	112	283	11	149	26
December	4 244	r 2 017	105	118	103	309	12	r 129	36
2001									
January r	3 883	1 561	93	87	62	313	10	125	19
February	3 495	1 686	115	116	80	262	10	122	26

(a) Figures shown are Customs value.

(b) Restrictions are placed on the release of statistics for certain commodities for reasons of confidentiality. The restrictions do not affect total export and import figures, but they can affect figures at State and commodity levels. More information on the treatment of confidential data in international merchandise trade statistics can be obtained from the Information Paper, International Merchandise Trade Statistics, Australia: Data Confidentiality (Cat. no. 5487.0), or the International Trade Confidentiality Manager on 02 6252 5409. Figures shown are Free On Board (FOB) values.

(c) Standard International Trade Classification Revision 3.

(d) Excludes re-exported goods.

Source: ABS unpublished data, International Trade database.

FOR MORE INFORMATION...

- INTERNET* **www.abs.gov.au** the ABS web site is the best place to start for access to summary data from our latest publications, information about the ABS, advice about upcoming releases, our catalogue, and Australia Now—a statistical profile.
- LIBRARY* A range of ABS publications is available from public and tertiary libraries Australia-wide. Contact your nearest library to determine whether it has the ABS statistics you require, or visit our web site for a list of libraries.
- CPI INFOLINE* For current and historical Consumer Price Index data, call 1902 981 074 (call cost 77c per minute).
- DIAL-A-STATISTIC* For the latest figures for National Accounts, Balance of Payments, Labour Force, Average Weekly Earnings, Estimated Resident Population and the Consumer Price Index call 1900 986 400 (call cost 77c per minute).

INFORMATION SERVICE

Data which have been published and can be provided within five minutes are free of charge. Our information consultants can also help you to access the full range of ABS information—ABS user-pays services can be tailored to your needs, time frame and budget. Publications may be purchased. Specialists are on hand to help you with analytical or methodological advice.

- PHONE* **1300 135 070**
- EMAIL* **client.services@abs.gov.au**
- FAX* 1300 135 211
- POST* Client Services, ABS, GPO Box 796, Sydney 1041

WHY NOT SUBSCRIBE?

ABS subscription services provide regular, convenient and prompt deliveries of ABS publications and products as they are released. Email delivery of monthly and quarterly publications is available.

- PHONE* 1300 366 323
- EMAIL* subscriptions@abs.gov.au
- FAX* 03 9615 7848
- POST* Subscription Services, ABS, GPO Box 2796Y, Melbourne 3001



2130710005014
ISSN 1031-8534

RRP \$18.00